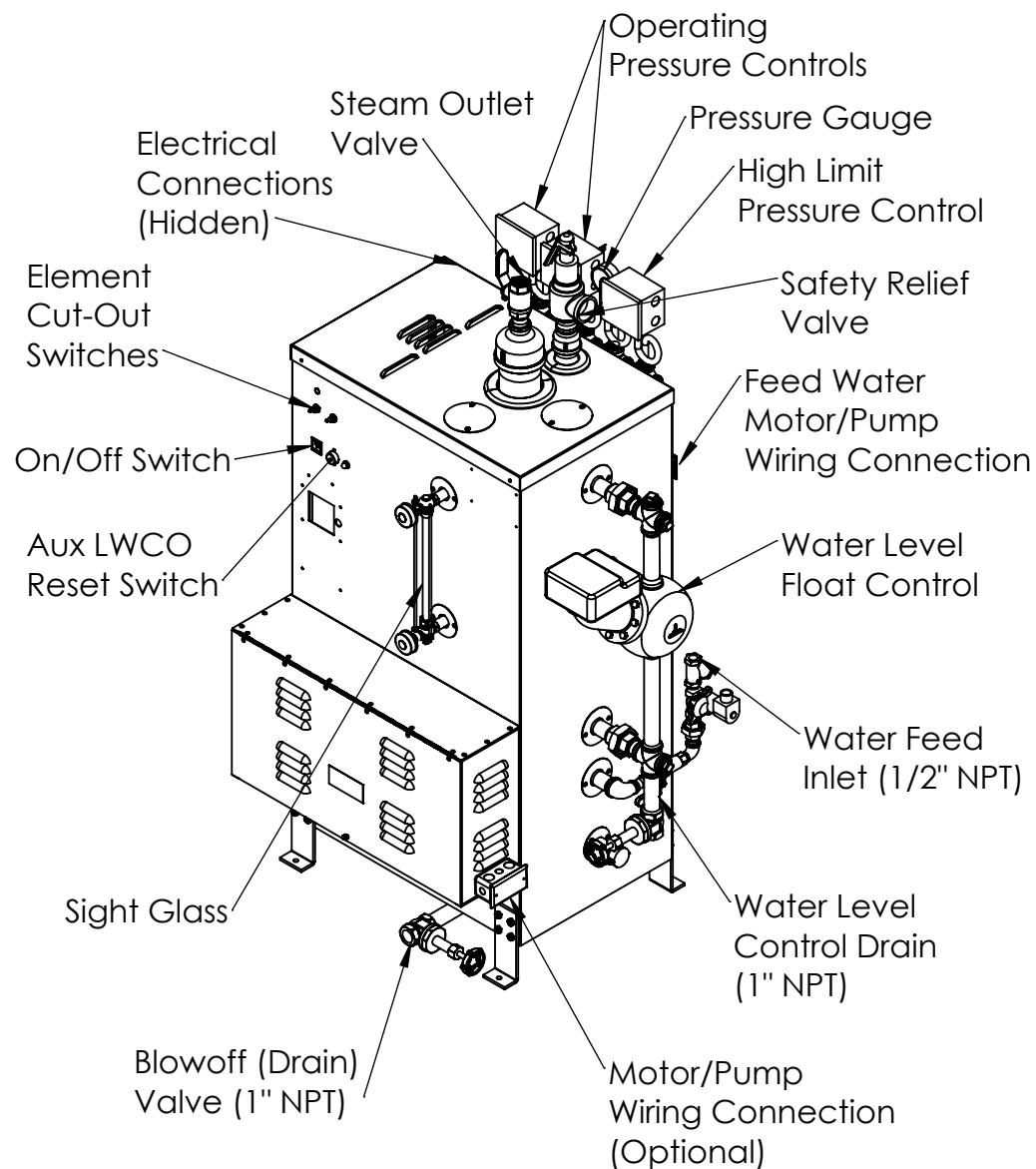
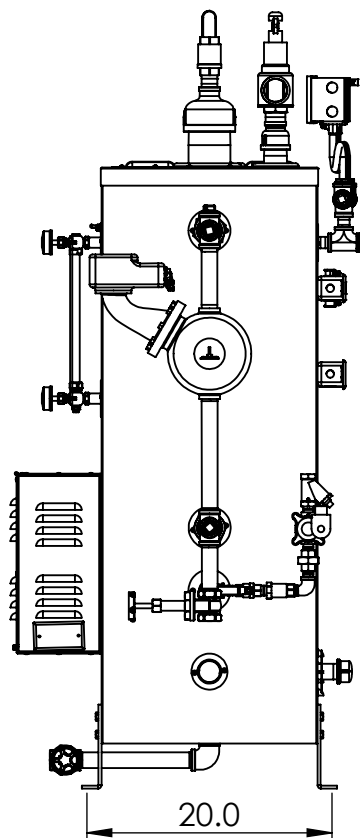
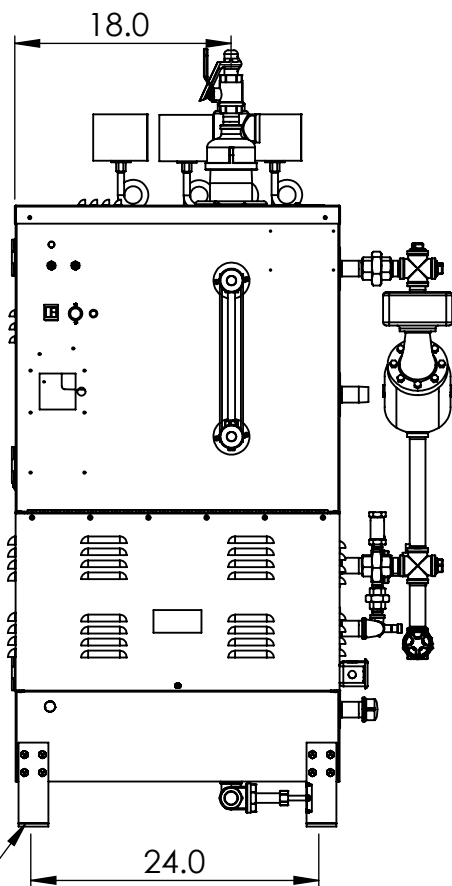
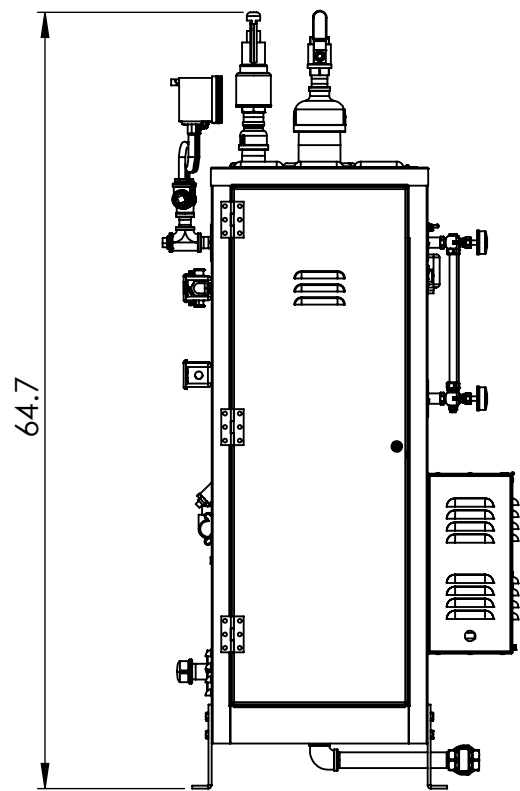
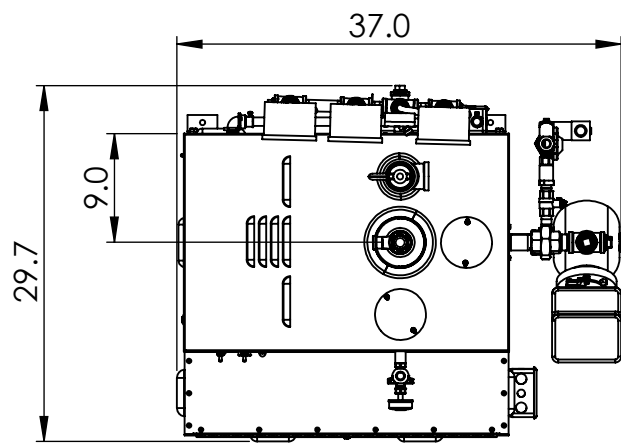


Notes:
 1. For ES85 to ES180, 150 psi trim, 380V, 415V, 480V & 600V, 3 phase
 2. Boiler is UL listed to standard 834
 3. Materials of construction:
 1. Vessel and Piping: Carbon Steel
 2. Jacket: Stainless Steel
 4. Pressure vessel built in accordance with ASME Section 1 and carries an "S" stamp
 5. Completed boiler is built in accordance with ASME Section 1 and carries an "E" Stamp
 6. CRN for Canada not available
 7. Refer to Technical Data Sheet at www.sussmanboilers.com for more information



Mounting Holes:
 4 x Ø .437"

DIMENSIONS ARE SHOWN IN INCHES [CENTIMETERS]
 TOLERANCES ARE AS FOLLOWS UNLESS OTHERWISE SPECIFIED
 X.XX X.XXX X.XXXX ANGULAR FINISH
 ±.12 ±.031 ±.0156 ±1.0° 250

REMOVE AND DEBURR SHARP EDGES AND CORNERS
 ALL DIMENSIONS ARE AFTER FINISH OR PLATING
 REFERENCE DIMENSIONS ARE SHOWN IN PARENTHESES ()
 CRITICAL DIMENSIONS ARE SHOWN IN

THIS DRAWING AND/OR SPECIFICATIONS ARE THE PROPERTY OF DIVERSIFIED HEAT TRANSFER INC. THIS CONFIDENTIAL AND PROPRIETARY INFORMATION SHALL NOT BE USED, COPIED OR REPRODUCED IN ANY MEANS AS THE BASIS FOR MANUFACTURE OR SALE OF APPARATUS WITHOUT WRITTEN AUTHORIZATION FROM OWNER.



439 MAIN RD. TOWACO NJ 07082
 PHONE: (800) 221-1522 FAX: (718) 386-7809

TITLE ES85-ES180 ELECTRIC STEAM BOILER,
 150 PSI 380V, 415V, 480V, 600V 3ph

| | | | | |
|-----|-----|----------------------|------|---------|
| A | | FOR RELEASE | JH | 5/31/24 |
| REV | ECN | REVISION DESCRIPTION | NAME | DATE |

| | | | | | | |
|------------------------|------------|----------------|------------|-----------|--------------|-----|
| THIRD ANGLE PROJECTION | DWG. SCALE | MATERIAL SPEC: | NAME | DATE | DWG# | REV |
| | 1:16 | | JH | 5/31/2024 | ES85-ES180 | |
| | | | CHECKED BY | | SHEET 1 OF 2 | |

4

3

2

1

4

3

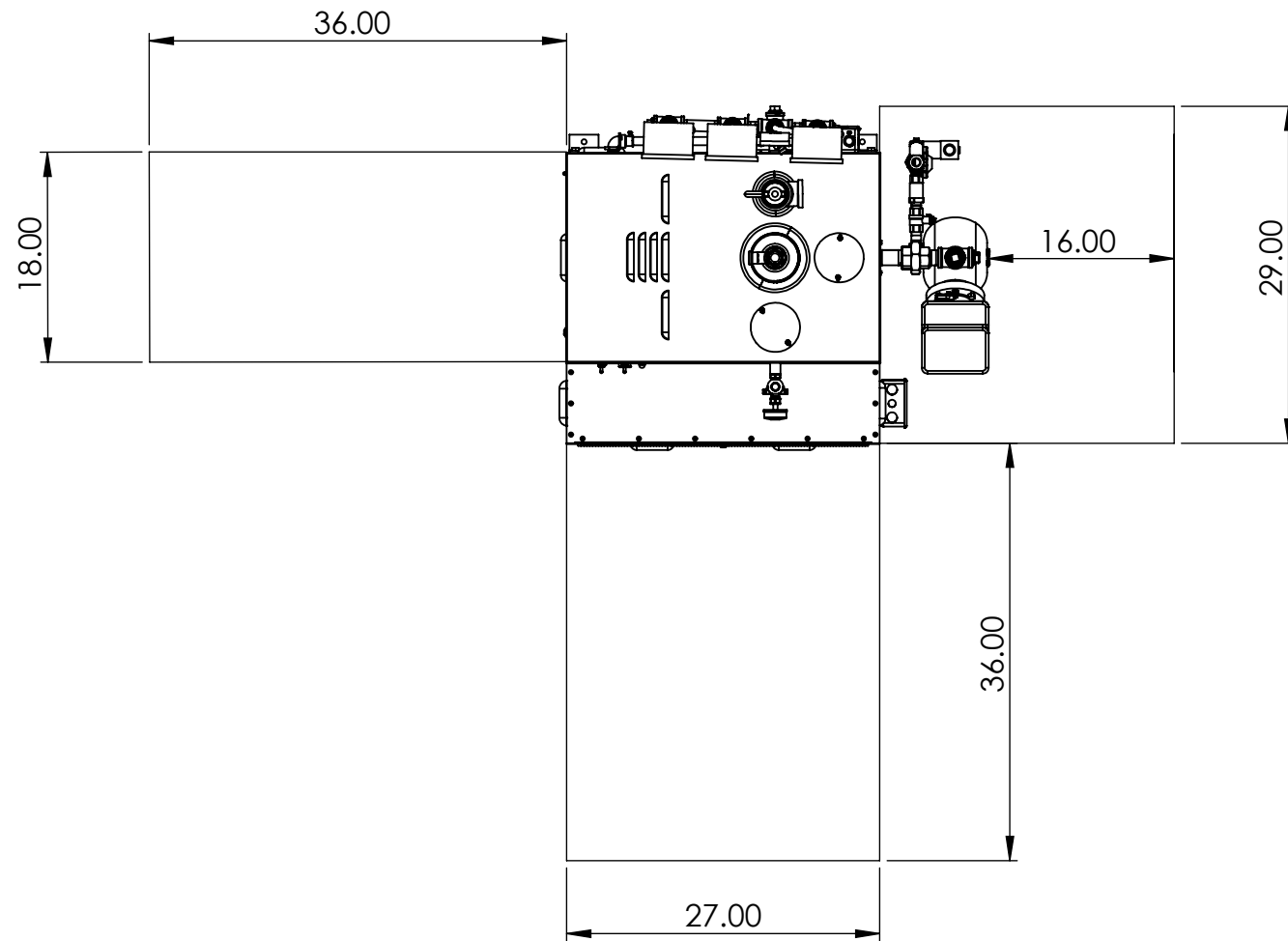
2

1

Notes:

1. Minimum 1" clearance to all combustible materials
2. Service clearances to be in conformance to NEC requirements

Service Clearance Requirements



| Boiler | kW | Pressure | Elements | Voltage | Amp Draw | Control Voltage | Steam Flowrate (lbs/hr) | Feed Water Consumption (GPM) | Recommened Min. Feed Water Rate (gpm) |
|--------|-------|----------|----------------------|---------|----------|-----------------|-------------------------|------------------------------|---------------------------------------|
| ES100 | 108 | 150 | 6 x 18kw | 380 | 164 | 240 | 325 | 0.65 | 1.95 |
| | | | | 415 | 150 | | | | |
| | | | | 480 | 130 | 120 | | | |
| | | | | 600 | 104 | | | | |
| ES85 | 84 | 150 | 4 x 18kw 1 x 12kw | 380 | 128 | 240 | 256 | 0.51 | 1.52 |
| | | | | 415 | 117 | | | | |
| | | | | 480 | 101 | 120 | | | |
| ES135 | 142 | 150 | 8 x 18kw | 380 | 216 | 240 | 433 | 0.87 | 2.6 |
| | | | | 415 | 198 | | | | |
| | | | | 480 | 171 | 120 | | | |
| ES160 | 157.5 | 150 | 7 x 22.5kw | 380 | 240 | 240 | 475 | 0.95 | 2.9 |
| | | | | 415 | 219 | | | | |
| | | | | 480 | 190 | 120 | | | |
| ES180 | 180 | 150 | 8 x 22.5kw | 380 | 274 | 240 | 542 | 1.09 | 3.3 |
| | | | | 415 | 251 | | | | |
| | | | | 480 | 217 | 120 | | | |
| | | | | 600 | 173 | | | | |

| Boiler | Total Volume (gal) | Operating Volume (gal) | Dry Weight | Wet Weight | Shipping Weight | Steam Outlet Size (NPT) | Water Feed Inlet Size (NPT) | Drain Outlet Size (NPT) | Safety Valve Outlet Size (NPT) |
|--|--------------------|------------------------|------------|------------|-----------------|-------------------------|-----------------------------|-------------------------|--------------------------------|
| ES85-ES100 | 36.5 | 22.8 | 638 | 836 | 720 | 3/4" | 1/2" | 1" | 3/4" |
| ES135-ES180 | | | | | | 1" | | | |
| Note: All weights do not include options. See option drawings for additional weights | | | | | | | | | |

DIMENSIONS ARE SHOWN IN INCHES (CENTIMETERS)
TOLERANCES ARE AS FOLLOWS UNLESS OTHERWISE SPECIFIED
X.XX X.XXX X.XXXX ANGULAR FINISH
±.12 ±.031 ±.0156 ±1.0° 250
REMOVE AND DEBURR SHARP EDGES AND CORNERS
ALL DIMENSIONS ARE AFTER FINISH OR PLATING
REFERENCE DIMENSIONS ARE SHOWN IN PARENTHESES ()
CRITICAL DIMENSIONS ARE SHOWN IN

THIS DRAWING AND/OR SPECIFICATIONS ARE THE PROPERTY OF DIVERSIFIED HEAT TRANSFER INC. THIS CONFIDENTIAL AND PROPRIETARY INFORMATION SHALL NOT BE USED, COPIED OR REPRODUCED IN ANY MEANS AS THE BASIS FOR MANUFACTURE OR SALE OF APPARATUS WITHOUT WRITTEN AUTHORIZATION FROM OWNER.



439 MAIN RD. TOWACO NJ 07082
PHONE: (800) 221-1522 FAX: (718) 386-7809

TITLE ES85-ES180 ELECTRIC STEAM BOILER,
150 PSI 380V, 415V, 480V, 600V 3ph

| | | | | |
|-----|-----|----------------------|------|---------|
| A | | FOR RELEASE | JH | 5/31/24 |
| REV | ECN | REVISION DESCRIPTION | NAME | DATE |

THIRD ANGLE PROJECTION



DWG. SCALE

1:16

MATERIAL SPEC:

NAME

DATE

DWG#

REV

DRAWN BY

JH

5/31/2024

ES85-ES180

CHECKED BY

SHEET 2 OF 2

4

3

2

1