

4

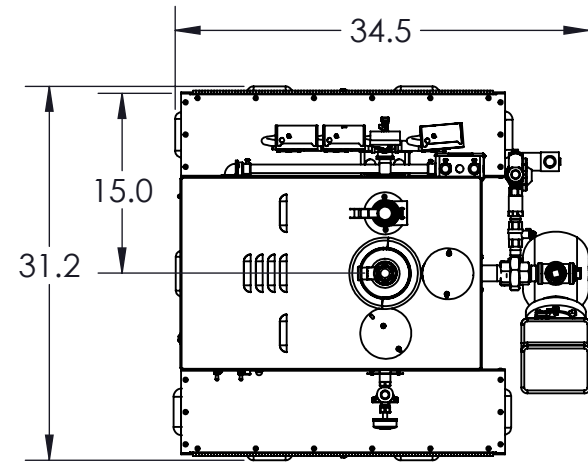
3

2

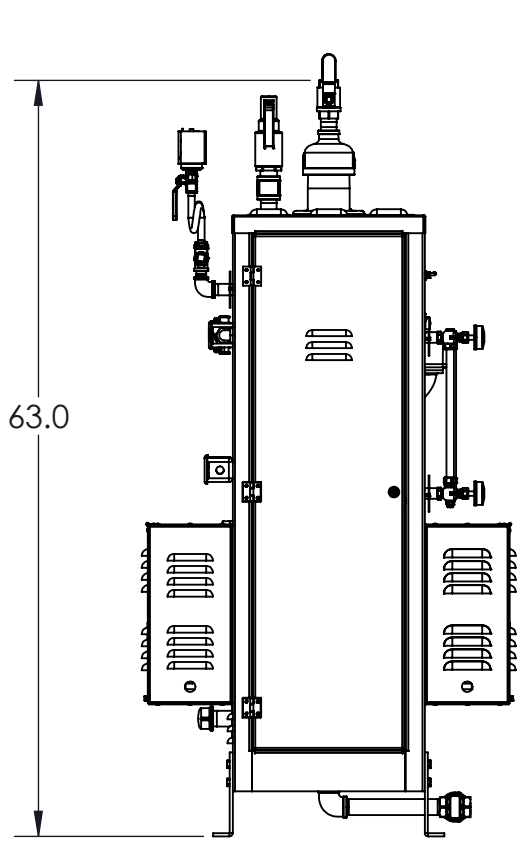
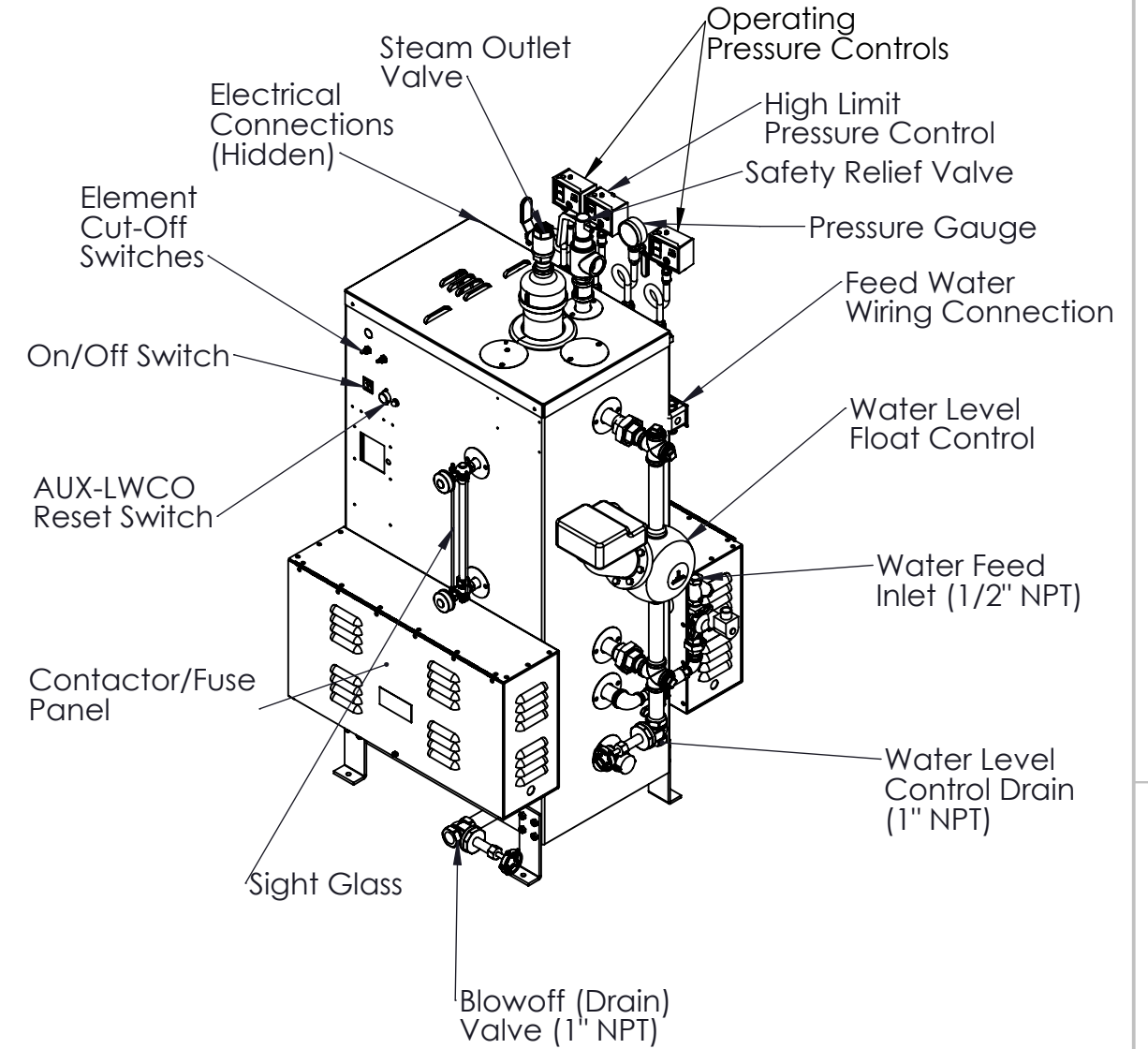
1

Notes:

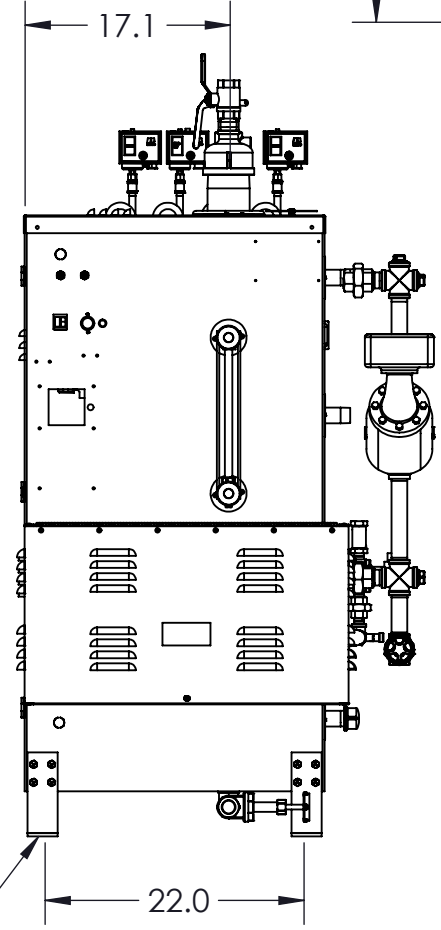
- 1. For ES85 to ES100, 15, 50, and 100 psi trims, 208V & 240V, 3 phase
- 2. Boiler is UL listed to standard 834
- 3. Materials of construction:
 - 1. Vessel and Piping: Carbon Steel
 - 2. Jacket: Stainless Steel
- 4. Pressure vessel built in accordance with ASME Section 1 and carries an "M" stamp
- 5. Completed boiler is built in accordance with ASME Section 1 and carries an "E" Stamp
- 6. Refer to Technical Data Sheet at www.sussmanboilers.com for more information



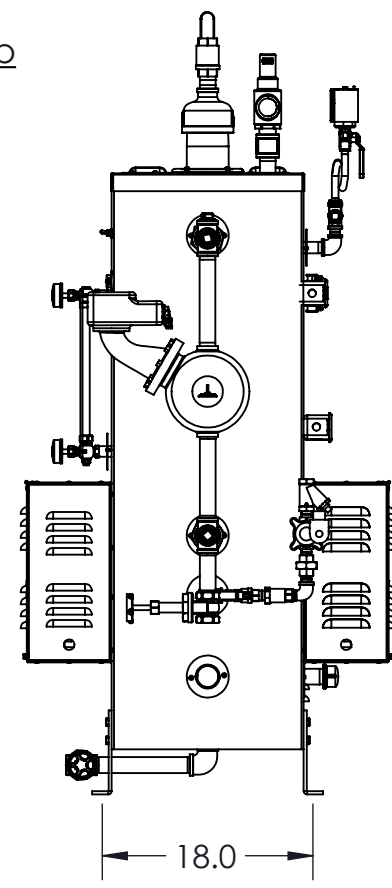
Top



Left



Front



Right

Mounting Holes:
4 x Ø .437"

DIMENSIONS ARE SHOWN IN INCHES (CENTIMETERS)
TOLERANCES ARE AS FOLLOWS UNLESS OTHERWISE SPECIFIED
X.XX X.XXX X.XXXX ANGULAR FINISH
±.12 ±.031 ±.0156 ±1.0° 250
REMOVE AND DEBURR SHARP EDGES AND CORNERS
ALL DIMENSIONS ARE AFTER FINISH OR PLATING
REFERENCE DIMENSIONS ARE SHOWN IN PARENTHESES ()
CRITICAL DIMENSIONS ARE SHOWN IN

THIS DRAWING AND/OR SPECIFICATIONS ARE THE PROPERTY OF DIVERSIFIED HEAT TRANSFER INC. THIS CONFIDENTIAL AND PROPRIETARY INFORMATION SHALL NOT BE USED, COPIED OR REPRODUCED IN ANY MEANS AS THE BASIS FOR MANUFACTURE OR SALE OF APPARATUS WITHOUT WRITTEN AUTHORIZATION FROM OWNER.



439 MAIN RD. TOWACO NJ 07082
PHONE: (800) 221-1522 FAX: (718) 386-7809

TITLE
ES85-ES100 ELECTRIC STEAM BOILER
15 PSI, 50 PSI, 100 PSI 208 V & 240 V/3 PH

A		FOR RELEASE	JH	12/27/23	THIRD ANGLE PROJECTION	DWG. SCALE	MATERIAL SPEC:		NAME	DATE	DWG#	REV
REV	ECN	REVISION DESCRIPTION	NAME	DATE		1:16		DRAWN BY	JH	12/27/2023	ES85-ES100	
								CHECKED BY			SHEET 1 OF 2	

4

3

2

1

4

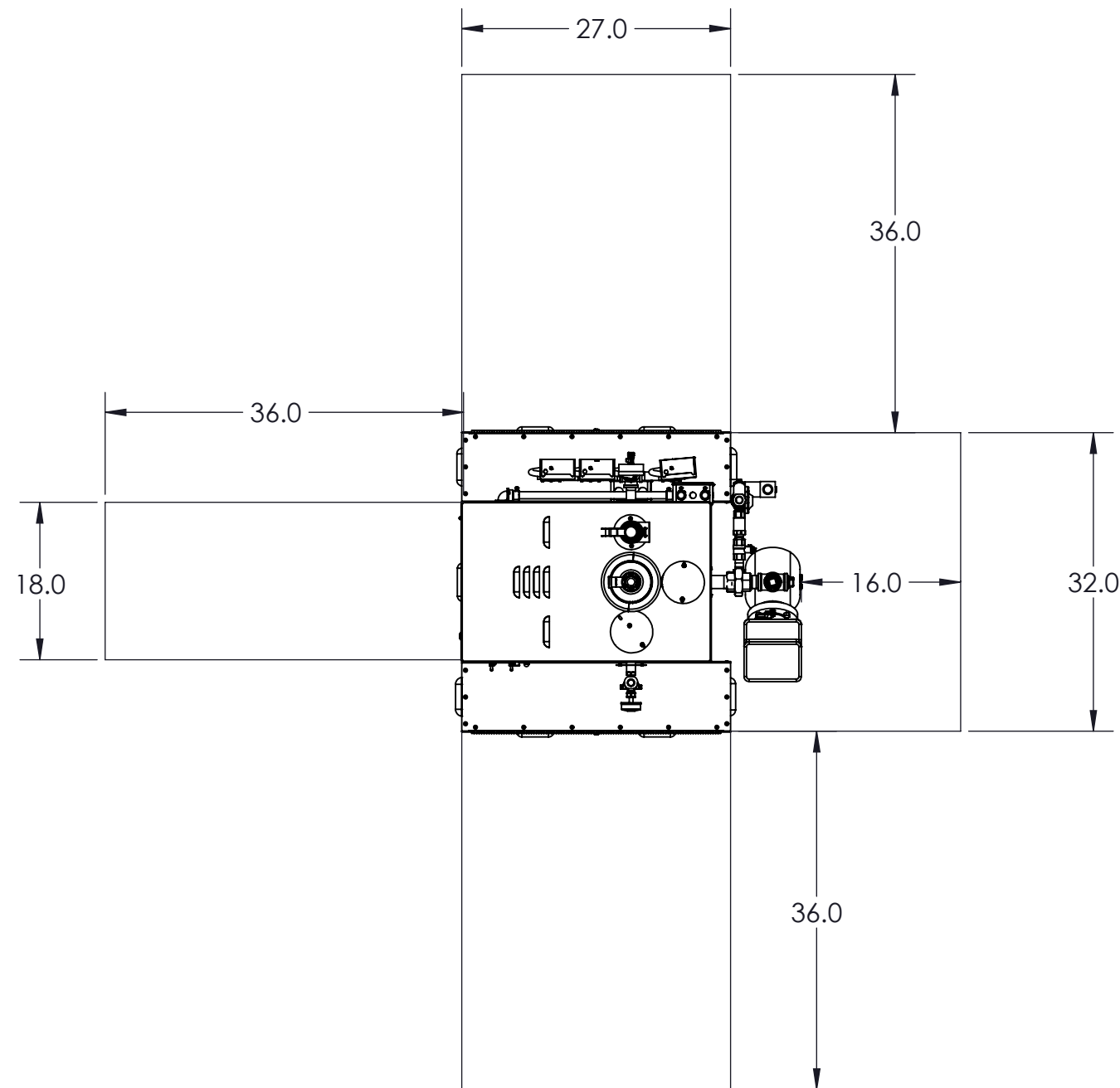
3

2

1

Notes:

1. Minimum 1" clearance to all combustibile materials
2. Service clearances to be in conformance to NEC requirements

Service Clearance Requirements

Boiler	kW	Pressure	Elements	Voltage	Amp Draw	Control Voltage	Steam Flowrate (lbs/hr)	Feed Water Consumption (GPM)	Reccomended Min. Feed Water Rate (gpm)
ES85	84	15	4 x 18kw	208	233	120	256	0.51	1.52
		50	1 x 12kw	240	202				
ES100	108	100	6 x 18kw	208	300		325	0.65	1.95
				240	260				
Boiler	Total Volume (gal)	Operating Volume (gal)	Dry Weight (LBS.)	Wet Weight (LBS.)	Shipping Weight (LBS.)	Steam Outlet Size (NPT)	Water Feed Inlet Size (NPT)	Drain Outlet Size (NPT)	Safety Valve Outlet Size (NPT)
ES85	28	17.5	435	586	680	1" (15)	1/2"	1"	1-1/2" (15)
ES100						3/4" (50&100)			1-1/4" (100)
Note: All weights do not include options. See option drawings for additional weights									

DIMENSIONS ARE SHOWN IN INCHES (CENTIMETERS)
TOLERANCES ARE AS FOLLOWS UNLESS OTHERWISE SPECIFIED
X.XX X.XXX X.XXXX ANGULAR FINISH
±.12 ±.031 ±.0156 ±1.0° 250
REMOVE AND DEBURR SHARP EDGES AND CORNERS
ALL DIMENSIONS ARE AFTER FINISH OR PLATING
REFERENCE DIMENSIONS ARE SHOWN IN PARENTHESES ()
CRITICAL DIMENSIONS ARE SHOWN IN

THIS DRAWING AND/OR SPECIFICATIONS ARE THE PROPERTY OF DIVERSIFIED HEAT TRANSFER INC. THIS CONFIDENTIAL AND PROPRIETARY INFORMATION SHALL NOT BE USED, COPIED OR REPRODUCED IN ANY MEANS AS THE BASIS FOR MANUFACTURE OR SALE OF APPARATUS WITHOUT WRITTEN AUTHORIZATION FROM OWNER.



439 MAIN RD. TOWACO NJ 07082
PHONE: (800) 221-1522 FAX: (718) 386-7809

TITLE
ES85-ES100 ELECTRIC STEAM BOILER
15 PSI, 50 PSI, 100 PSI 208 V & 240 V/3 PH

A	FOR RELEASE	JH	12/27/23	THIRD ANGLE PROJECTION	DWG. SCALE	MATERIAL SPEC:	NAME	DATE	DWG#	REV
REV	ECN	REVISION DESCRIPTION	NAME	DATE	1:16		DRAWN BY	JH	12/27/2023	ES85-ES100
							CHECKED BY			SHEET 2 OF 2

4

3

2

1